

I.C.T.

Posters

The posters are colourful and informative. Using the posters in the classroom, computer labs, noticeboards and corridors makes learning fun and interesting and teaching becomes easy and effective too.

Reasons for using posters

1. About one third of students in an average classroom are visual learners.
2. Visual learners respond well to **colour**.
3. Images, photographs and diagrams are helpful learning aids for visual learners.
4. Words linked to pictures help visual learners grasp and remember new concepts.
5. Posters help reinforce important concepts and can be referred to regularly.
6. Posters can act as reference for students instead of asking the teachers.
7. Posters can keep your classroom/school fresh and **stimulating**.

Posters – Hardware



What is ICT? (A1 size)
Code: ICT 01



A Computer System (A1 size)
Code: ICT 02



Computer Jargon (A1 size)
Code: ICT 03

CMN Enterprise

19 Soo Chow View Singapore 575411

Tel: 90600089 Fax : 65199196, Email: cmn@live.com.sg



Data Logging (A1 size)
Code: ICT 31



Computer Simulations (A1 size)
Code: ICT 32



Sound & Music (A1 size)
Code: ICT 33



Icons (A1 size)
Code: ICT 34



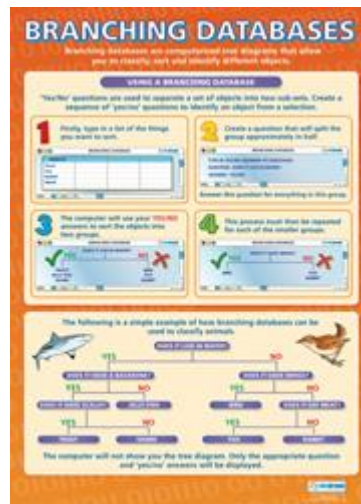
Presenting Data (A1 size)
Code: ICT 35



Presentations New & Old (A1 size)
Code: ICT 36



Multimedia Presentations (A1 size)
Code: ICT 37

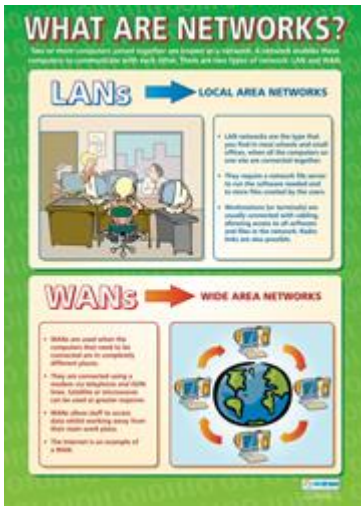


Branching Databases (A1 size)
Code: ICT 46

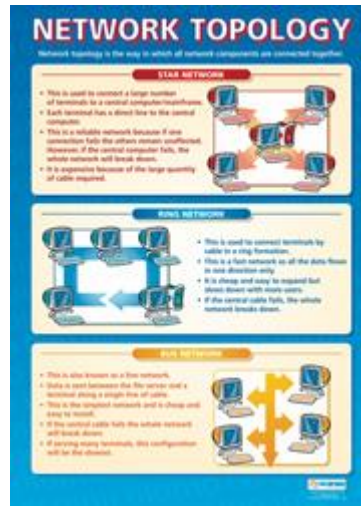


System Analysis (A1 size)
Code: ICT 47

Posters – Network & The Internet



What Are Networks? (A1 size)
Code: ICT 39



Network Topology (A1 size)
Code: ICT 40



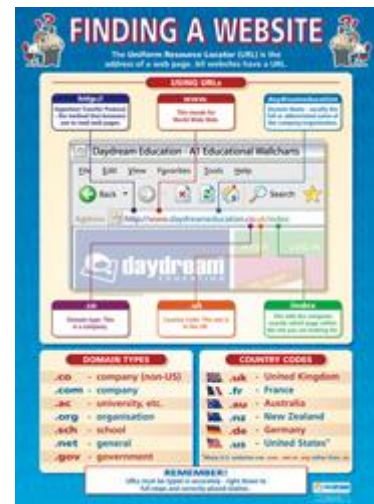
Network Adv and Disadv (A1 size)
Code: ICT 41



Navigating The Web (A1 size)
Code: ICT 42



e-mail (A1 size)
Code: ICT 43



Finding A Website (A1 size)
Code: ICT 44



Designing A Website (A1 size)
Code: ICT 45



Internet Security (A1 size)
Code: ICT 48



Computer Misuse Act (A1 size)
Code: ICT 49

E-mail cmn@live.com.sg for enquiries

Posters – Network & The Internet

SPREADSHEET FEATURES

A spreadsheet is a computer model that performs calculations and displays data.

Rows
A row is a horizontal block of cells. Each row is identified numerically. The highlighted row is Row 2.

Columns
Each cell in a spreadsheet has a unique cell reference. The column letter and the row number are used to identify the cell.

Formulas
A formula is a calculation that is entered into a cell. The formula bar is used to enter the formula.

Cell reference
The cell reference displays the location of a cell or group of cells.

Example Spreadsheet

Roll No.	Name	Score	Result
1082	Ashraf	23	PASS
1212	Ashar	35	PASS
1882	Sayyaf	40	PASS
1324	Sam	18	FAIL
1433	Paul	29	PASS

Cells
Each cell in a spreadsheet has a unique cell reference. The column letter and the row number are used to identify the cell.

Cell and Font Format
With spreadsheet it is possible to change the font style, color and size. It is also possible to change the background and border color of cells.

Alignment
The Merge & Centre tool is used to combine cells and centers text. It is used for headings and titles.

Number
It is important to select the correct number format when using spreadsheets. There are many options to choose from. The number of decimal places displayed.

Graphs & Charts
Graphs and charts provide visual representations of numerical data. They are generally easy to interpret and help identify patterns and trends.

Sorting
Cells can be sorted according to rules set for one or more columns.

Formulas and Functions
There are various formulae and functions available in spreadsheets.

Basic Symbols
Add, Subtract, Divide, Multiply, AutoSum

Functions
SUM, AVERAGE, ROUND, MAX, MIN, IF, COUNTIF

Spreadsheet Features (A1 size)
Code: ICT 50 (NEW)

DATA LOGGING & CONTROL SYSTEMS

Data logging is the process of capturing data using sensors. The data is then stored on a computer for analysis.

Sensors
A sensor is an input device that detects or measures physical conditions. Sensors are used to measure: Light, Temperature, Sound, Air Pressure, Radioactivity, Humidity, Continuity.

Advantages of Data Logging
Data logging can be used to record information in dangerous environments. Data logging machines do not require breaks. Intervals are more accurate than when taken manually. Data can be collected over a very short or very long period of time.

Control Systems
Control systems are made up of software and hardware that control the operation of equipment. Data from data logging systems is often used in control systems to activate equipment such as traffic lights and heaters in air conditioning systems.

Most control systems use a feedback loop in their operation.

Heater
A control system is used in fish tanks to control water temperature.

- First, a temperature range is set on the computer, such as 20-25°C.
- When the sensor detects that the temperature has fallen below the minimum temperature (20°C), a feedback signal is sent to the computer and the heater is switched on.
- Once the sensor has detected that the water temperature has returned to the predetermined range, a feedback signal is sent to the computer and the heater is switched off.

Data Logging & Control Systems (A1 size)
Code: ICT 64 (NEW)

SPREADSHEET FORMULAE AND FUNCTIONS

Basic Symbols
Add, Subtract, Divide, Multiply, AutoSum

Functions
SUM, AVERAGE, ROUND, MAX, MIN, IF, COUNTIF

SUM
The SUM function is used to calculate the sum of a range of cells.

AVERAGE
The AVERAGE function is used to calculate the average of a range of cells.

ROUND
The ROUND function is used to round a number to a specific number of decimal places.

MAX or MIN
The MAX and MIN functions are used to find the largest and smallest values, respectively, in a selected data range.

IF
The IF function is used to determine whether a specific condition is true or false.

COUNTIF
The COUNTIF function is used to count the number of cells that meet a specific criteria.

Spreadsheet (A1 size)
Code: ICT 65 (NEW)

NETWORKS

A network is a connection of two or more computers that enables these computers to share resources and communicate with each other. There are two types of network:

Local Area Network (LAN)
A LAN enables the connection of two or more computers on one site.

Wide Area Network (WAN)
A WAN enables the connection of two or more computers in multiple locations.

Advantages
Expensive peripherals, such as printers, can be shared. Users can communicate quickly through the network. Data can be accessed by multiple users in different locations. Software can be installed onto the server and accessed simultaneously by users. Upgrading is also easier.

Disadvantages
The labour and equipment needed to set up and manage a network can be expensive. If there is a fault with the server the whole network may stop working. The network can be slow if many users are trying to access the same program at the same time. Security measures need to be in place to prevent unauthorised access of data.

Networks (A1 size)
Code: ICT 70 (NEW)

INTERNET SAFETY

The Internet is a huge source of information and means of communication. However, not all of the information or people online are trustworthy.

S - **Secure**
Ensure personal information and passwords are kept private. Do not put any of your contact details online and always check your privacy settings on social networking websites. Never use your real name for your username and ensure passwords are difficult to guess.

M - **Meet**
Never meet with an online friend in person, even if you think you know that person well. Meeting someone from a social networking website could be dangerous. Online friends are still strangers and may not be who they say they are.

A - **Accept**
Do not open e-mails from people you do not know. Friends and establishments may receive spam, unwanted messages and images. Therefore, any suspicious e-mails should be deleted.

R - **Reliable**
Not all of the information or people online are reliable. There is a lot of false information. Always check that the information is correct. Some dangerous people can fake identities in chat rooms and on social networking websites. Try to limit your friends to 'real' friends.

T - **Tell**
Tell a trusted adult if anything online makes you feel uncomfortable. Many chat rooms and social networking websites have support e-mail addresses or chat buttons that enable users to report bullying or inappropriate behaviour. You can log off if you are uncomfortable or suspicious of anything.

Be careful what you share online!
Anything you post online or send in an e-mail, such as a photo or message, can be copied or shared by anyone who can see it.

Internet Safety (A1 size)
Code: ICT 74 (NEW)

E-mail cmn@live.com.sg for enquiries

Posters – Snap Frames

Snapframes are designed for quick and hassle free changeover of posters. They are sold fully assembled and ready to use, with clear PVC cover sheet to protect your poster. The frames are light enough to wall-mount with 4 screws.



All four sides of the Snap Frames can be easily snapped open. Just lift up four sides of frame by hand, insert your poster, place protective sheet on top and then snap frames to close without tools, as easy as 1-2-3!

Features & Benefits of Snap Frame

- Simple - access on all sides of the frame, simply flip open and change posters!
- Good visibility - clear and non-reflective PVC cover
- Durable - made of lightweight yet strong aluminium
- Instant - requires no assembly and arrives ready to use.
- Quick - Change poster from the front, no tools required!
- Eye catching - attracts attention of customers walking past
- Stable - Easy and quick wall mount with use of screws or poster hooks

E-mail cmn@live.com.sg for enquiries

Inspired by colour



Visual learning at its best

ORDER FORM

CMN ENTERPRISE

19 Soo Chow View Singapore 575411

E-mail: cmn@live.com.sg Website: http://cmnsg.weebly.com Tel: 90600089 Fax: 65199196

Free delivery for order above \$150.

Description	Code	Unit Price	Qty	Total
Hardware				
What is ICT?	ICT 01	28.00		
A Computer System	ICT 02	28.00		
Computer Jargon	ICT 03	28.00		
Storing Data	ICT 04	28.00		
Hardware	ICT 05	28.00		
What Goes Where	ICT 06	28.00		
Input	ICT 07	28.00		
Output	ICT 08	28.00		
Using A Keyboard	ICT 09	28.00		
A Laptop Computer	ICT 10	28.00		
What's What	ICT 25	28.00		
Printers	ICT 27	28.00		
Health & Safety	ICT 28	28.00		
Software				
Computer Users	ICT 11	28.00		
Software	ICT 12	28.00		
Graphics Software	ICT 13	28.00		
Databases & Spreadsheets	ICT 14	28.00		
Word-Processing	ICT 15	28.00		
File Extensions	ICT 16	28.00		
Operating Systems	ICT 29	28.00		
User Interfaces	ICT 30	28.00		
Data Logging	ICT 31	28.00		
Computer Simulations	ICT 32	28.00		
Sound & Music	ICT 33	28.00		
Icons	ICT 34	28.00		
Presenting Data	ICT 35	28.00		
Presentations New & Old	ICT 36	28.00		
Multimedia Presentations	ICT 37	28.00		

Description	Code	Unit Price	Qty	Total
Branching Databases	ICT 46	28.00		
System Analysis	ICT 47	28.00		
Network & the Internet				
Ways to Communicate	ICT 17	28.00		
Internet Use	ICT 19	28.00		
Internet Features	ICT 18	28.00		
Internet Jargon	ICT 20	28.00		
Internet Advantages	ICT 21	28.00		
Internet Disadvantages	ICT 22	28.00		
e-commerce	ICT 23	28.00		
The Data Protection Act	ICT 24	28.00		
Computers In Society	ICT 38	28.00		
What Are Networks?	ICT 39	28.00		
Network Topology	ICT 40	28.00		
Network Adv and Disadv	ICT 41	28.00		
Navigating The Web	ICT 42	28.00		
e-mail	ICT 43	28.00		
Finding A Website	ICT 44	28.00		
Designing A Website	ICT 45	28.00		
Internet Security	ICT 48	28.00		
Computer Misuse Act	ICT 49	28.00		
Spreadsheet features (New)	ICT 50	28.00		
Data Logging & Control Systems (New)	ICT 64	28.00		
Spreadsheet (New)	ICT 65	28.00		
Networks (New)	ICT 70	28.00		
Internet Safety (New)	ICT 74	28.00		
Snap Frame (A1 size, silver matt)	SF1	85.00		
Frame Mounting Service (min 5 pcs)	-	10.00		
Lamination service (A1 size)	-	20.00		
Delivery(for orders < \$150)		15.00		

Please fax form to 65199196. An e-mail will be sent to confirm stock availability. Please allow 3-8 weeks for delivery.

Grand Total

Confirmed & Signed by:

Name: E-mail: Contact No:

Signature & Organisation Stamp

School : Address: Date:

Visit <http://cmnsg.weebly.com/> for more information